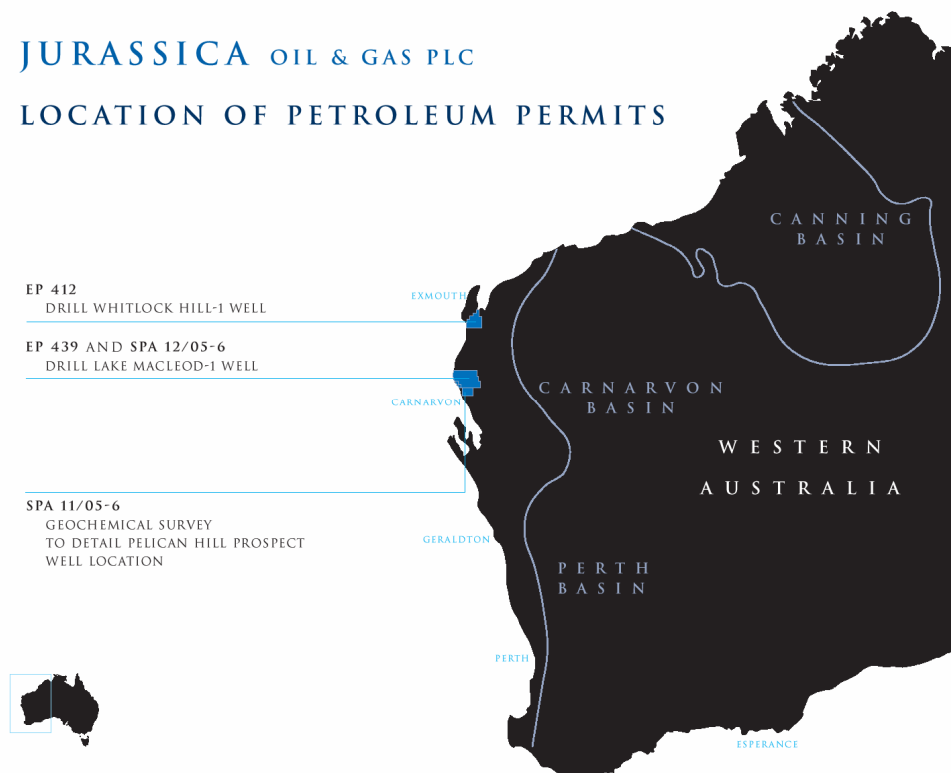


# JURASSICA OIL & GAS PLC

NOVEMBER 2006

## JURASSICA OIL & GAS PLC

### LOCATION OF PETROLEUM PERMITS



JURASSICA OIL & GAS PLC

## WESTERN AUSTRALIAN PROJECTS

EP 439 AND SPA 12/05-6

LAKE MACLEOD-1

SPA 11/05-6 GEOCHEM SURVEY AND  
DRILL PELICAN HILL

EP 412 WHITLOCK HILL-1

JURASSICA OIL & GAS PLC

EXPLORATION PERMIT EP 439 AND SPA 12/05-6

- LARGE PERMIT 1.8 MILLION ACRES
- LAKE MACLEOD PROSPECT READY TO DRILL
- ESTIMATED POTENTIAL RECOVERABLE RESERVES 150 MILLION BARRELS OF OIL
- EXCELLENT OIL AND GAS SHOWS IN QUOBBA-1 DOWNDIP TO THE WEST
- GOOD RESERVOIR IN LATE DEVONIAN DOLOMITES FLOWED 1,000 BWPD IN QUOBBA-1
- GOOD OIL PRONE SOURCE ROCKS IN LATE DEVONIAN MARINE SHALES
- DEVONIAN SOURCE ROCKS IN OIL WINDOW OVER MOST OF EP 439
- SHALLOW DRILLING. TD 1000 METRES

# JURASSICA OIL & GAS PLC

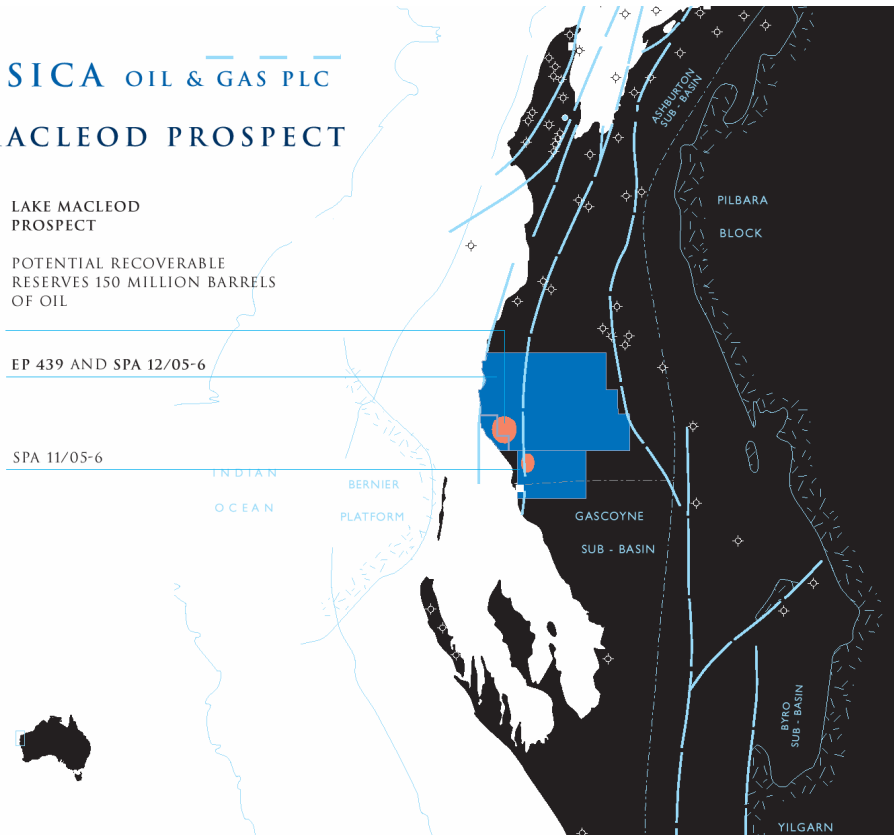
## LAKE MACLEOD PROSPECT

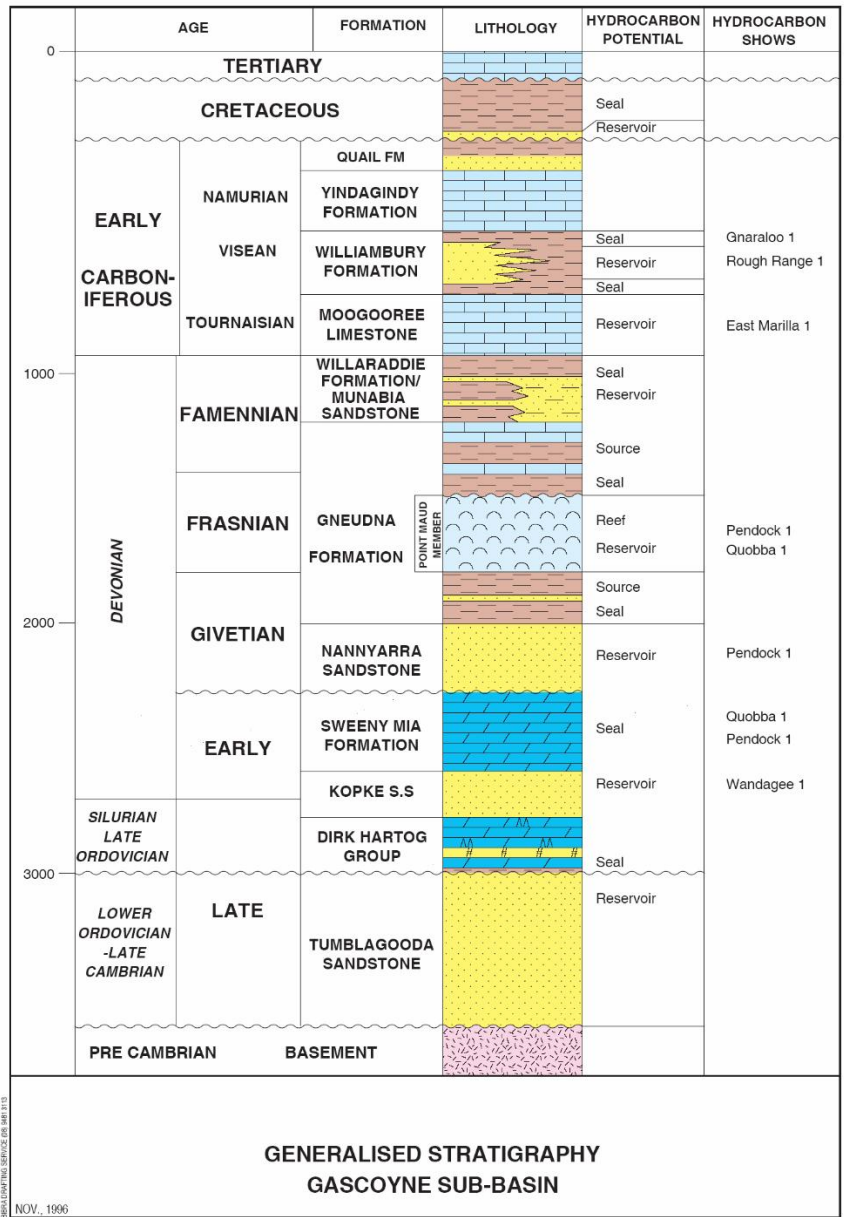
LAKE MACLEOD  
PROSPECT

POTENTIAL RECOVERABLE  
RESERVES 150 MILLION BARRELS  
OF OIL

EP 439 AND SPA 12/05-6

SPA 11/05-6



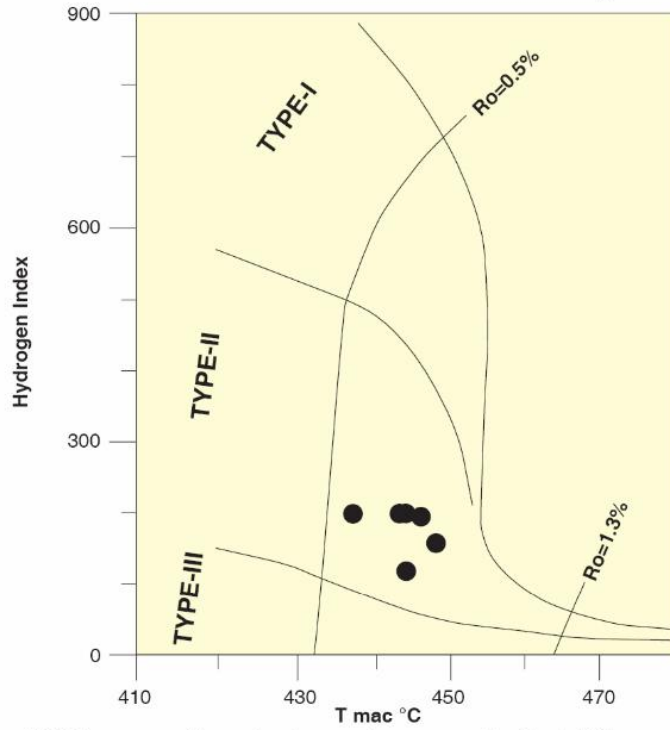


**GENERALISED STRATIGRAPHY  
GASCOYNE SUB-BASIN**

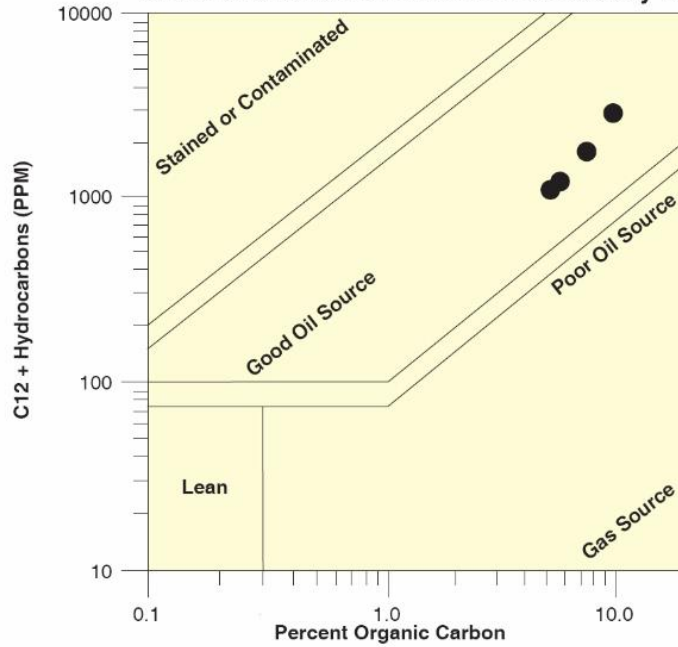
BRISBANE REPORTING SERVICE (P/S) 0481 31113  
NOV. 1996  
BEV96\_16

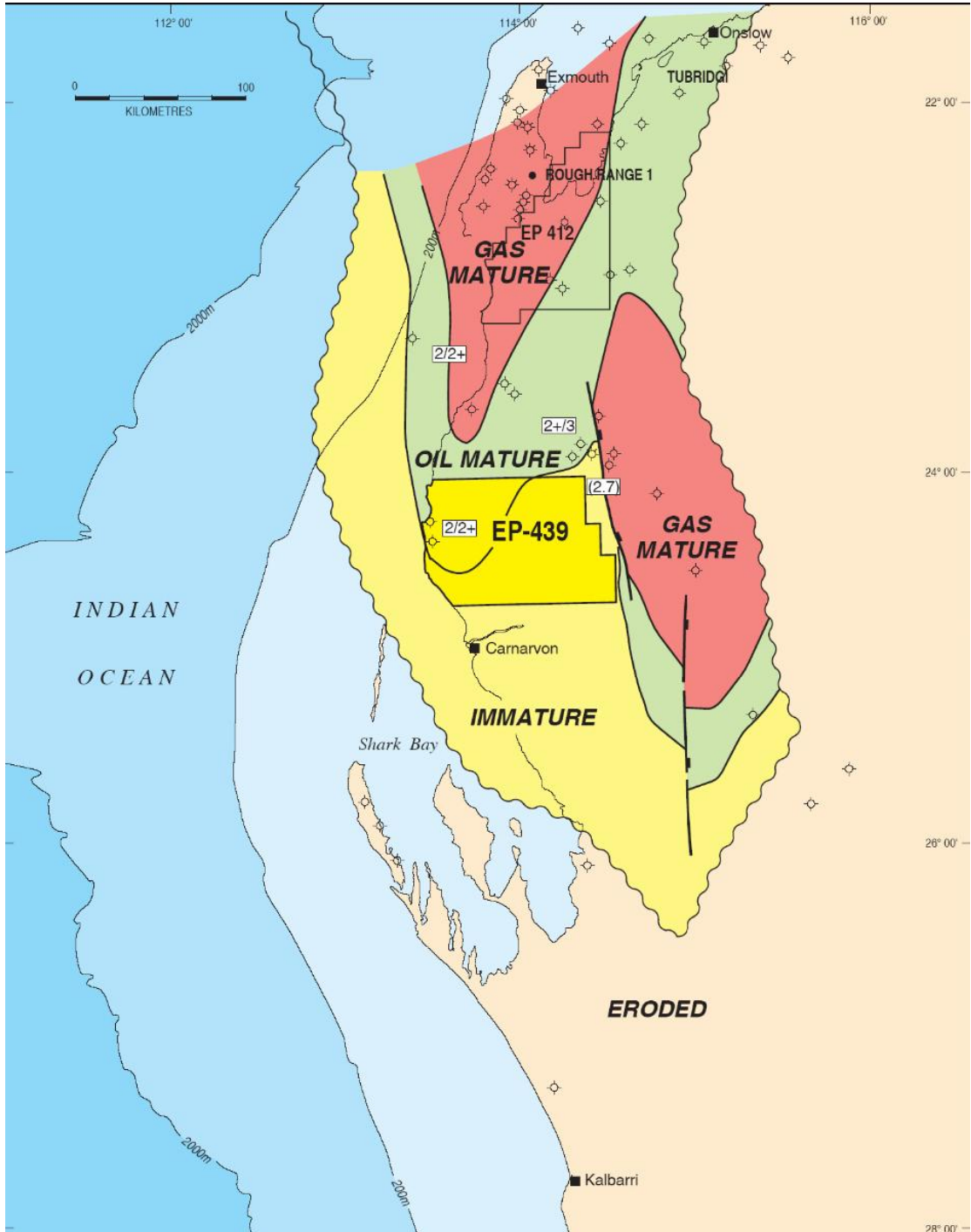
FIGURE 2

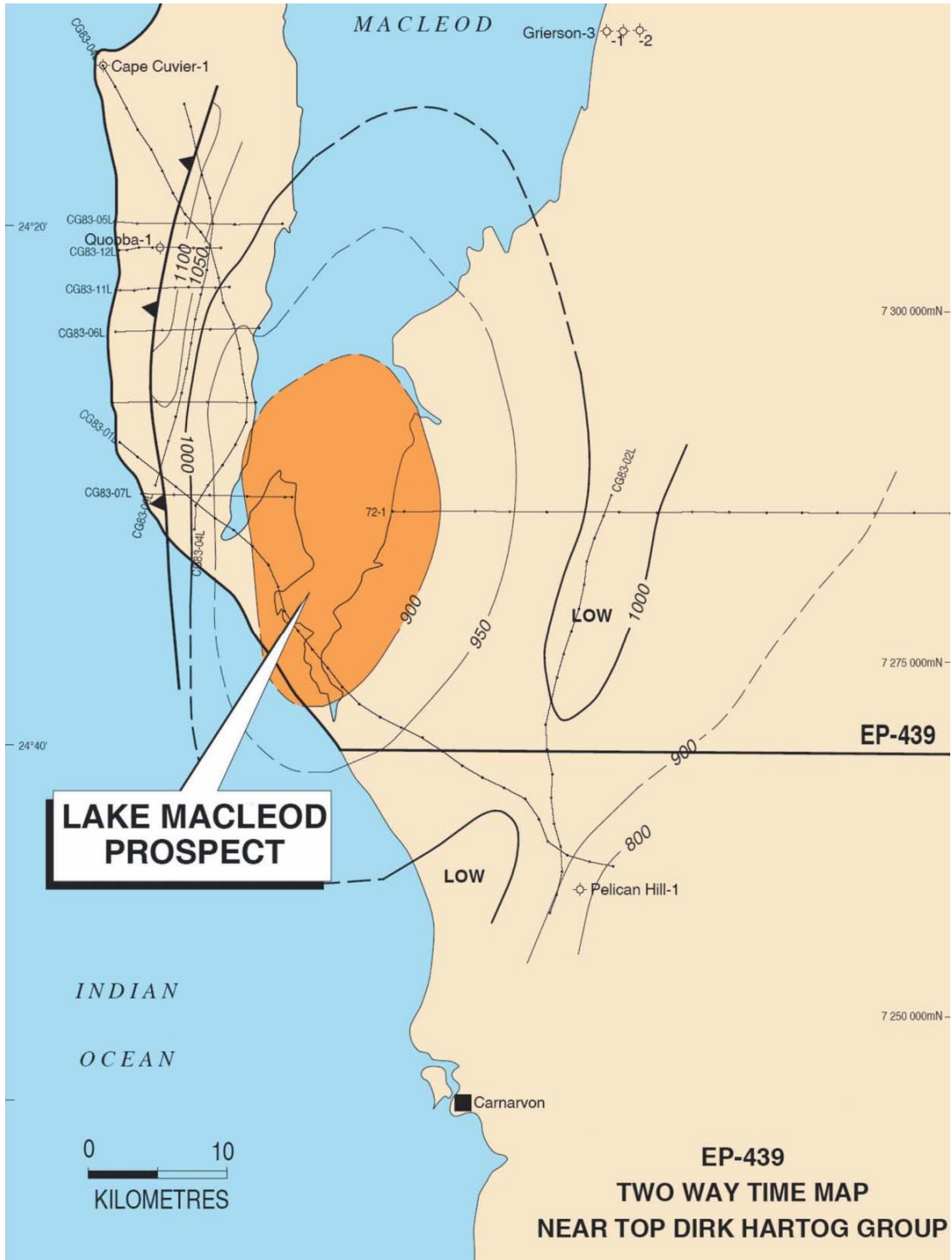
Source-rock kerogen typing by Rock-Eval pyrolysis  
of the Gneudna Formation in Barrabiddy 1/1A



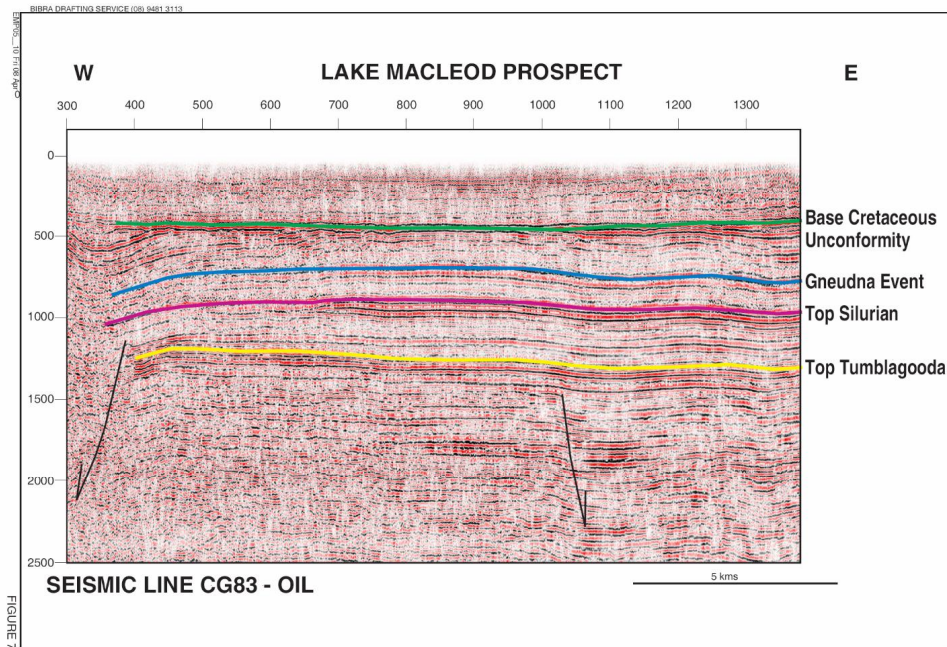
TOC versus C<sub>12</sub> + hydrocarbons content plot for source rocks  
of the Gneudna Formation in Barrabiddy 1A











## JURASSICA OIL & GAS PLC

### SPA 11/05-6

- LARGE PERMIT 480,000 ACRES
- PELICAN HILL PROSPECT READY TO DRILL
- ESTIMATED POTENTIAL RESERVES 25 MILLION BARRELS OF OIL OR 50 BCF GAS
- GOOD RESERVOIR ON EARLY CRETACEOUS BIRDRONG SANDSTONE
- GOOD SEAL IN EARLY CRETACEOUS MARINE SHALES MUDERONG SHALE
- HYDROCARBONS LEAKING UP INTO CRETACEOUS RESERVOIRS FROM UNDERLYING DEVONIAN
- SHALLOW DRILLING. TD 400 METRES



# JURASSICA OIL & GAS PLC

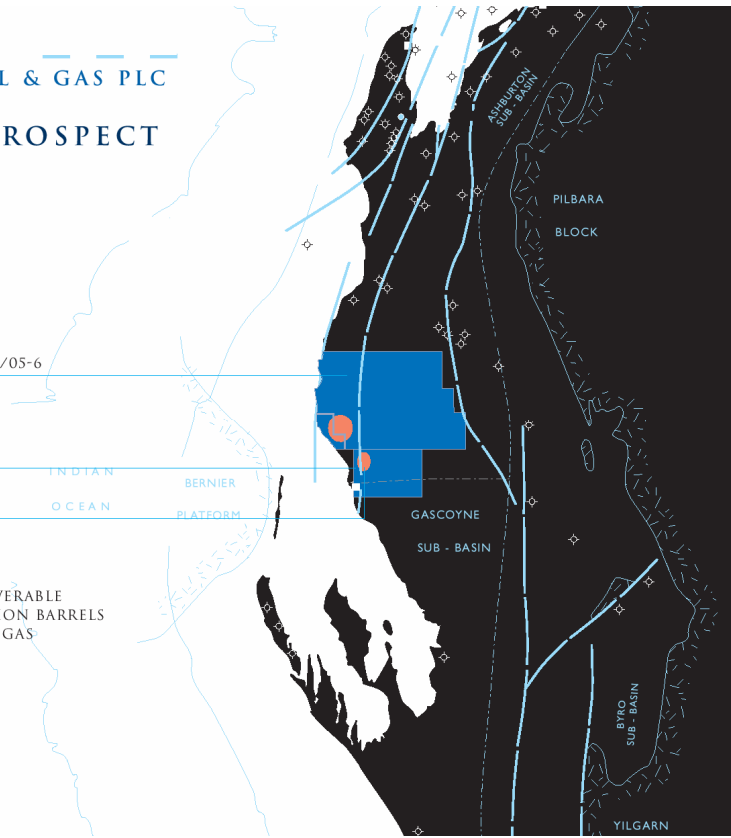
## PELICAN HILL PROSPECT

EP 439 AND SPA 12/05-6

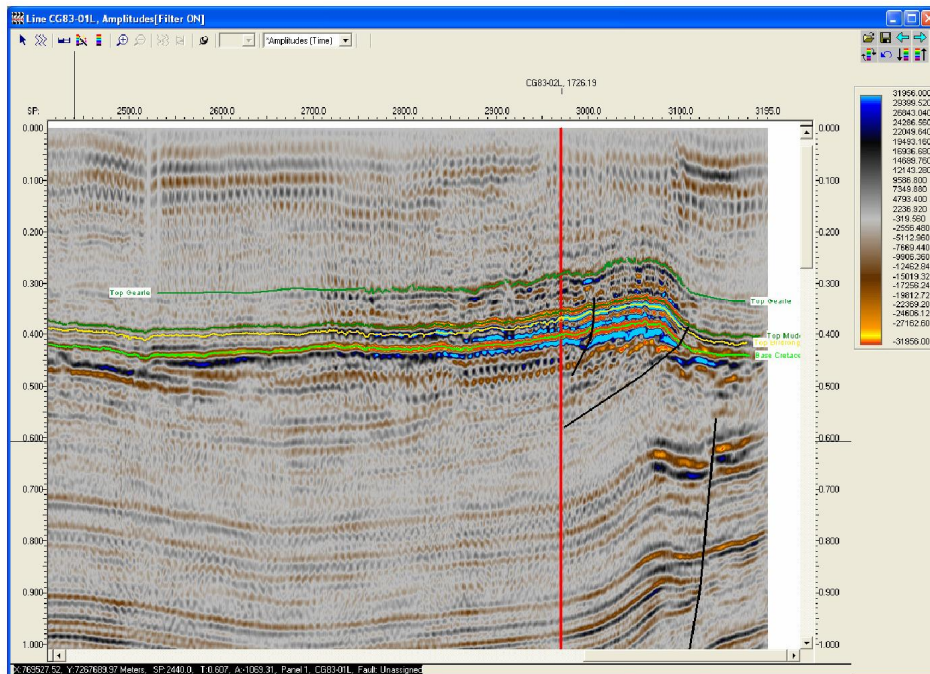
SPA 11/05-6

PELICAN HILL PROSPECT

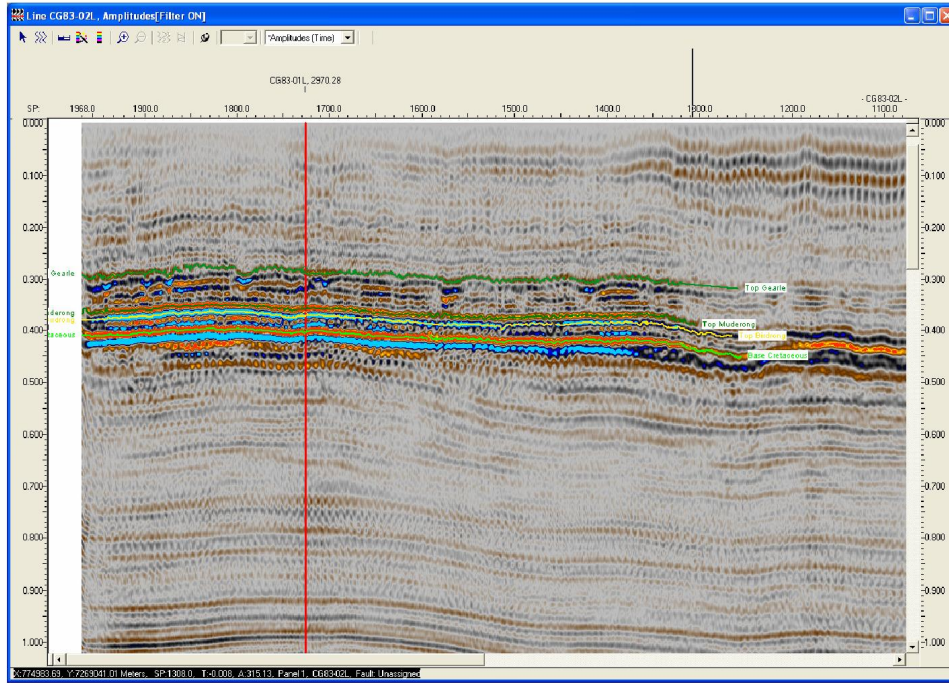
POTENTIAL RECOVERABLE RESERVES 25 MILLION BARRELS OF OIL OR 50 BCF GAS



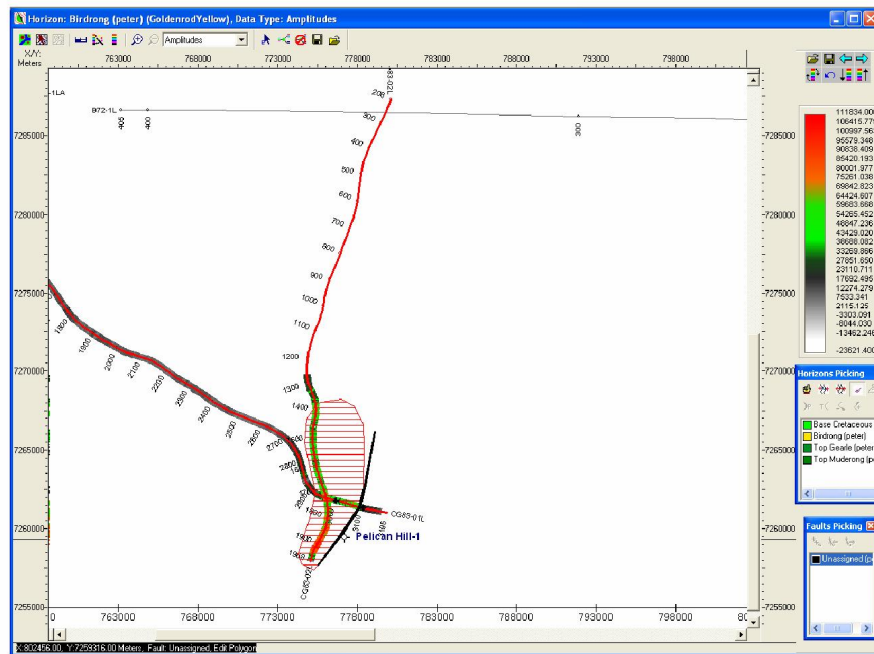
Dip Line CG83-01L



## Strike Line CG83-02L



## Location Map – Extent of Amplitude Anomalies

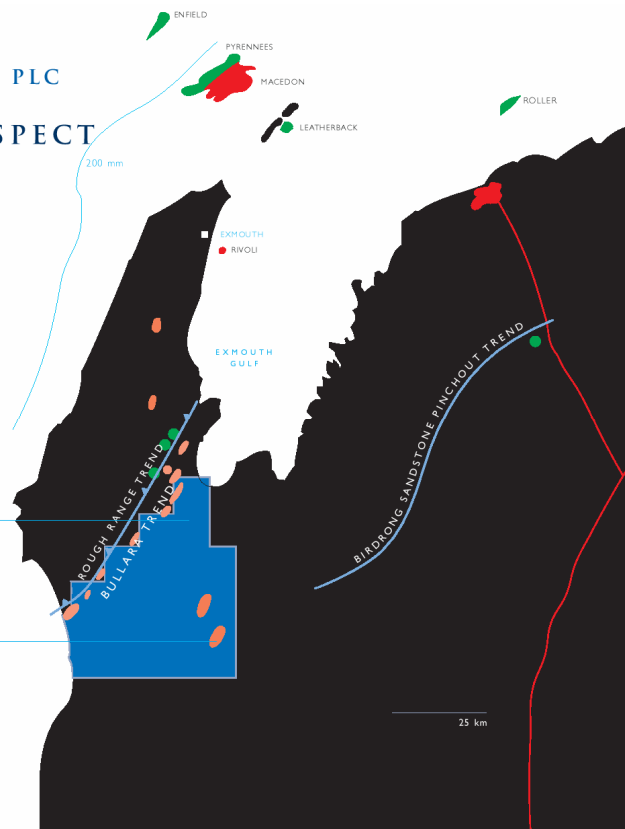


## JURASSICA OIL & GAS PLC EXPLORATION PERMIT EP 412

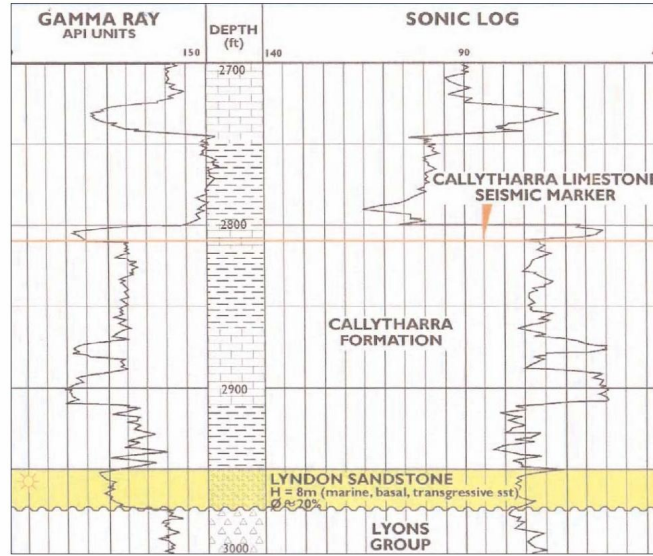
- LARGE PERMIT 660,000 ACRES
- WHITLOCK HILL PROSPECT READY TO DRILL
- ESTIMATED POTENTIAL RESERVES 50 BCF  
ALSO PROSPECTIVE FOR OIL
- GOOD RESERVOIR IN PERMIAN SANDS
- GOOD GAS PRONE SOURCE ROCKS IN PERMIAN
- PERMIAN SOURCE ROCKS IN GAS WINDOW IN  
PATERSON TROUGH
- AVO ANOMALY ON SEISMIC
- SHALLOW DRILLING. TD 800 METRES

## JURASSICA OIL & GAS PLC WHITLOCK HILL PROSPECT

EP 412  
WHITLOCK HILL  
PROSPECT  
POTENTIAL RECOVERABLE  
RESERVES 50 BCF GAS



# JURASSICA OIL & GAS PLC

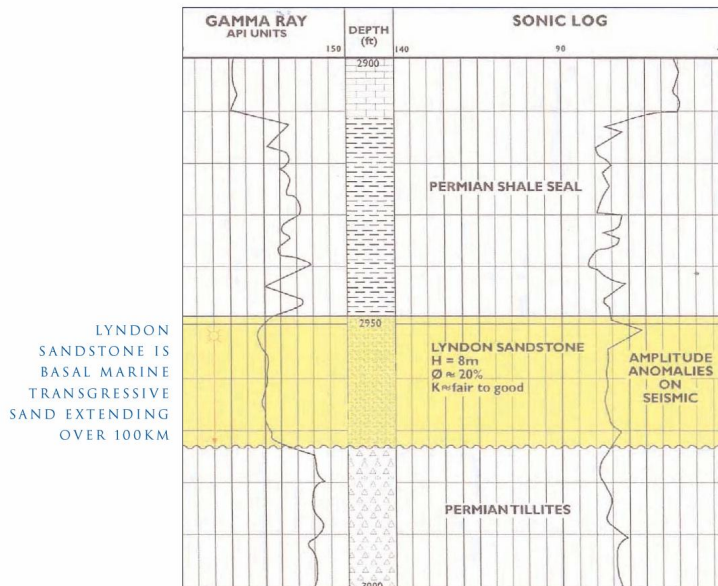


LYNDON SANDSTONE

(LOWER PERMIAN SECTION)

REMARKABLE HILL - 1 (1969) EP 412

# JURASSICA OIL & GAS PLC



LYNDON SANDSTONE IS BASAL MARINE TRANSGRESSIVE SAND EXTENDING OVER 100KM

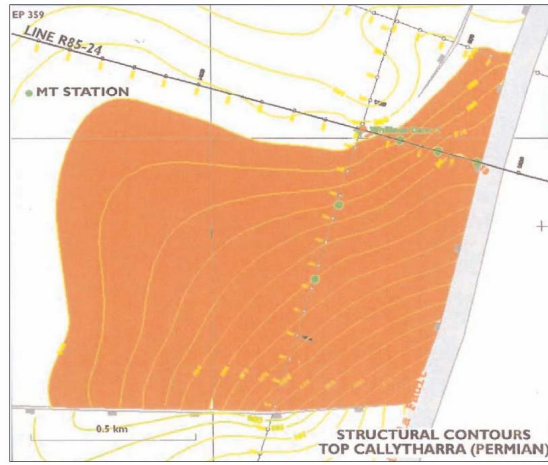
LYNDON SANDSTONE

(LOWER PERMIAN SECTION)

REMARKABLE HILL - 1 (1969) EP 412

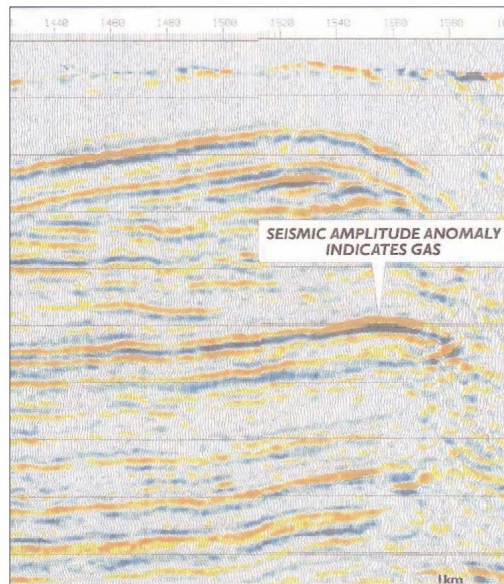


# JURASSICA OIL & GAS PLC



WHITLOCK  
HILL  
GAS PROSPECT  
EP 412

# JURASSICA OIL & GAS PLC



WHITLOCK  
HILL  
GAS PROSPECT  
EP 412

SEISMIC LINE  
85-024